

JANUARY 11, 2005

Orange County, California restaurant lateral at intersection with sewer main, prior to pre-trial cleaning. The main had previously been cleaned to some extent every 30 days.



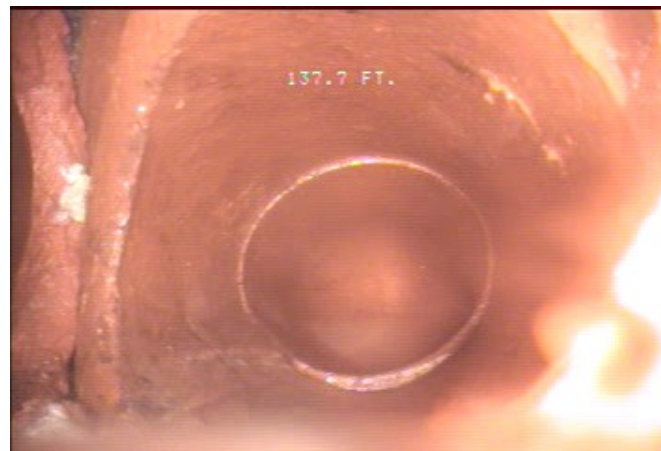
**SEWER MAIN
(LATERAL AT
RIGHT OF
EACH IMAGE)**



**LATERAL LINE
(AS VIEWED
FROM SEWER
MAIN)**

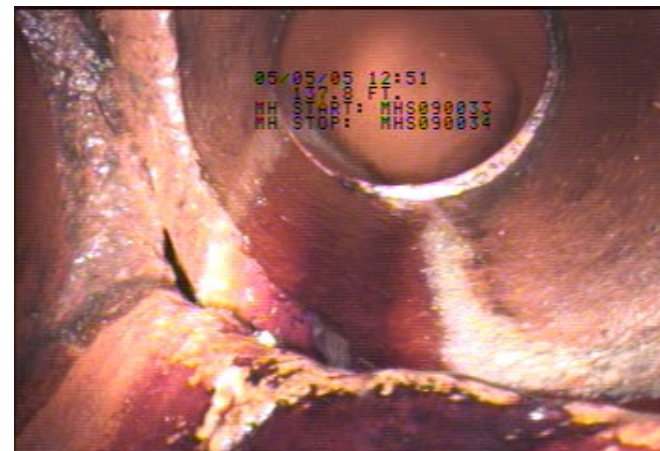
JANUARY 13, 2005

Same Orange County, California restaurant lateral at intersection with sewer main. Images captured immediately after cleaning of main, two days prior to installation of BESTech Biofeed® system.



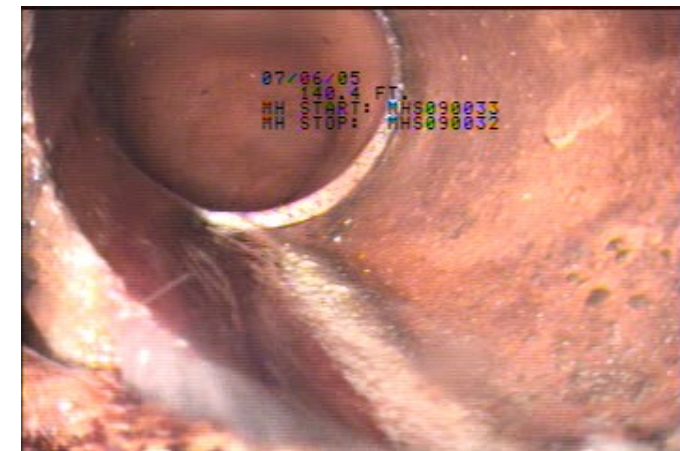
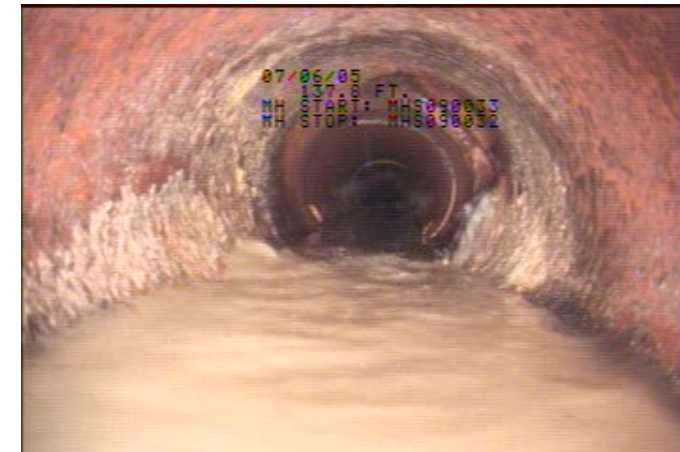
JUNE 5, 2005

Same Orange County, California restaurant lateral at intersection with sewer main (143-day build-up). Images captured 141 days after installation of BESTech Biofeed system.



JULY 6, 2005

Same Orange County, California restaurant lateral at intersection with sewer main (176-day build-up). Images captured 174 days after installation of BESTech Biofeed system.



The above images were taken from videos of the inside of an Orange County, California sewer main at the point where the main intersects with a lateral line emanating from a high-volume full-service restaurant. A BESTech Biofeed® system was installed in the restaurant (which does not utilize a grease interceptor) on January 15, 2005. The videos were recorded periodically between January and July 2005 as part of a study, underwritten by several Orange County municipalities, to determine the effectiveness of various drain line maintenance products, including BESTech Biofeed.



7329 International Place
Sarasota, FL 34240 USA
Toll-free 866.907.BEST
or 941.907.7788
info@bestechcorp.com
www.bestechcorp.com